

# Textile Printing

14 Products Guaranteed to Improve  
Your Textile Printing Operation



## Direct Emulsions

### CP Tex, DIAZO Sensitized Direct Emulsion

CP Tex offers a highly water resistant stencil designed for long run applications.

- Designed for **water based, discharge, and plastisol inks**
- High Solids: 42% sensitized; Viscosity 4300 CPS
- Extremely durable, yet reclaimable with high pressure washer
- Violet color

### ChromaBlue™, CT-R

#### Pure Photopolymer Direct Emulsions

For use with plastisol inks, ideally suited for textile printers using direct emulsions who are seeking faster screen turnaround without sacrificing image quality.

- Very fast exposing
- Fast drying
- Superior mesh bridging
- Excellent reclaimability
- High solids — lower cost per screen



## Presensitized Film for Heavy Ink Deposit

### Chroma/Tech Super PHAT™ Film

Super PHAT Film is the ideal thick stencil for printing high density and special effects inks.

#### Sizes Available (Microns)

100, 150, 200, 250, 300, 350, 400, 700

#### Available

Rolls 26" x 7' (66cm x 2.1m) (24" x 7' PHAT 700)

Ten Sheet Boxes 17" x 24" (43cm x 61cm)

# Textile Printing

14 Products Guaranteed to Improve Your Textile Printing Operation



## Pallet Adhesives

### TexTac

A water-based, pressure-sensitive adhesive designed for adhering textiles to pallets in the screen printing process. TexTac provides consistent registration without transferring to the garment. A single application may hold hundreds of garments before it is necessary to reapply. One gallon of TexTac lasts as long as 4 cases of aerosols. Freeze/thaw stable.

## InkJet Film for Photo Positives

### AccuArt™ 3 Inkjet Film

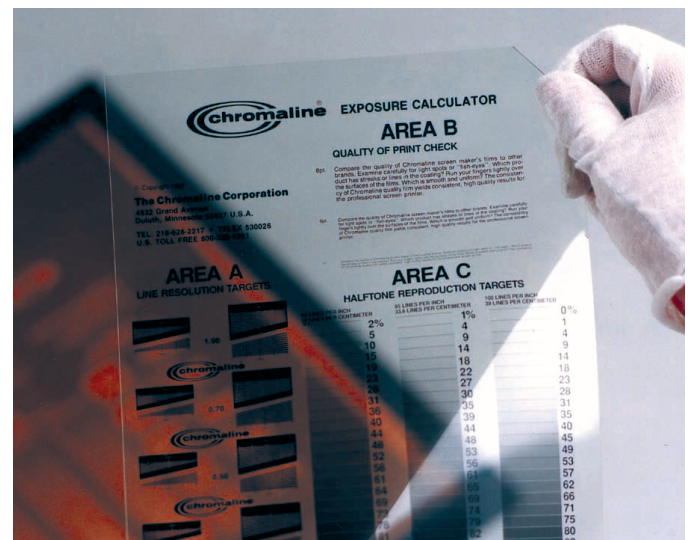
Print photo positives on nearly any printer, with nearly any ink.

- Print with pigment and dye based inks
- Excellent density and clarity - DMAX up to 4.0, DMIN .10
- Ink dries instantaneously - Impervious to water and humidity

### AccuBlack™

AccuBlack offers clarity and translucency far surpassing vellum at a fraction of the cost of other inkjet films.

- For use with dye-based and pigment based inks
- Good density and clarity - DMAX up to 4.0, DMIN .07



Chromaline Exposure Calculator

## Quality Screen Chemicals

<p><b>Chroma/Stencil™ Remover 285</b> Purchase Remover 285 in highly concentrated liquid to be diluted with 20-40 parts water.</p>	<p><b>Chroma/Haze™ Haze Remover</b> Removes haze and ghost images, very low odor, does not separate.</p>	<p><b>Chroma/Clean™ Mesh Degreaser</b> Lathers quickly, works fast and reduces pinholes and fish eyes.</p>	<p><b>Chroma/Set™ Emulsion Hardener</b> Fights humidity, extends stencil life, short cure time, can be reclaimed.</p>
<p><b>Chroma/Last™ Two Part Hardener</b> Makes a permanent stencil for maximum stencil life, cannot be reclaimed, great for discharge inks.</p>	<p><b>Chroma/Fill™ Red Screen Block-Out</b> Coats smooth, dries fast, use with solvent-based, UV and plastisol inks.</p>	<p><b>Chroma/Press™ Wash 450</b> Evaporative, containing some citrus solvent. For use on textile inks.</p>	<p><b>Chroma/Screen™ Wash 920</b> All-purpose, for removing nearly all ink types, contains ink degradant and degreasing agents.</p>



www.chromaline.com

1-800-328-4261



Follow us on Facebook & Twitter

An IKONICS Company | ISO 9001 Certified | NASDAQ Listed: IKNX



120416